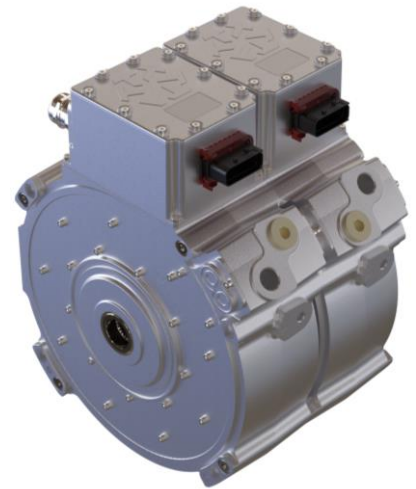


Turntide Axial Flux Motor D Series – AF300D

The Turntide Axial Flux Motor 300 Double stack (AF300D) offers exceptional power density, with one of the highest peak power and torque ratings in its class, at over 11.2 kW/kg and 15.6 Nm/kg at 800 V_{DC}.

The AF300D, with its short axial length, is well-suited for high-performance applications in a compact space claim. The unique magnetic topology coupled with electromagnetic, thermal, and manufacturing optimisation results in a breakthrough product offering with exceptional features. It offers smooth, quiet operation with low torque ripple while supporting inverter supply voltages of up to 850 V_{DC}.



Features

- **Peak efficiency** of 96% at continuous load, equivalent to the highest efficiency class of IE4
- **Indirect liquid cooling** using standard medium of water - ethylene glycol for high power density
- **Through-shaft** female spline as per ISO 4156, enabling dual output system integration
- **Designed for operation** up to 850 VDC and peak overvoltage support up to 1 kV VDC
- **Low cogging and torque ripple**, allowing smooth system operation and low NVH characteristics
- **Axially stackable motor design platform**, enabling scaled torque and power levels
- **Product configuration** to provide flexibility in high voltage connections (glands or Amphenol Powerlok), top box orientation, stator turn-count, interface adaptors
- **Stator winding turn-count configuration options** allow the maximisation of the torque-speed performance envelope across different application voltage levels and current capabilities
- **Durable construction** with testing to ISO 16750 environmental standards
- **Ingress protection** rated to IP67 and IP6K9K

Applications

The AF300D delivers the same high torque density and smooth operation as the AF300S across a wide 0 to 8,000 rpm operating range, while scaling performance to support double the continuous power (around 140 kW). This makes it well suited to higher-duty traction applications, including passenger vehicles, recreational vehicles, and light- to medium-duty commercial BEVs, as well as dual traction and generation roles in hybrid commercial platforms. Its compact, double-stack axial-flux design also supports off-highway, construction, agricultural, and industrial applications such as hydraulic pump drives, cooling fans, auxiliary implements, and combined traction-generation systems, where high power density, efficient packaging, and dependable performance are required.



TURNTIDE TECHNOLOGIES

Turntide Technologies designs and manufactures breakthrough electric motors, power electronics and energy storage solutions that optimize performance, reliability, and efficiency in all things that move.

Turntide Technologies, Eighth Avenue, Team Valley Trading Estate, Gateshead, NE11 0QA, UK

turntide.com | electrificationsales@turntide.com

Details are correct at time of publishing

TTG-MAN-009
V5.0 – 08/05/2026

Specification

Performance	3 Turn, 800V _{DC}	6 Turn, 800V _{DC}	3 Turn, 400V _{DC}	6 Turn, 400V _{DC}
Motor Speed				
Max Speed (rpm)	8,000	8,000	8,000	8,000
Peak Performance (S2-20 seconds)				
Maximum Torque* (Nm)	904.6	904.6	904.6	904.6
Maximum Power* (kW)	648	334	334	148
Maximum Current** (A_{rms})	498	249	498	249
Continuous Performance (S1-60 mins)				
Continuous Maximum Torque* (Nm)	387.8	382	387.8	382
Continuous Maximum Power* (kW)	146	132	132	70
Maximum Continuous Current** (A_{rms})	202	101	202	101

*These performance values have been rated at 45 °C ambient, 55 °C inlet coolant, 16 lpm flow rate. At coolant temperatures over 55 °C and/ or ambient over 45 °C derating may be required. DC Voltage, number of 3-phase sets, winding turns and switching frequency will affect the performance envelope and input current requirements. **Maximum current applies to a single inverter with 3 HV cables. In a dual 3-phase setup (6 HV cables), maximum current is split between both inverters. Please contact Turntide for further information.

Operation Conditions

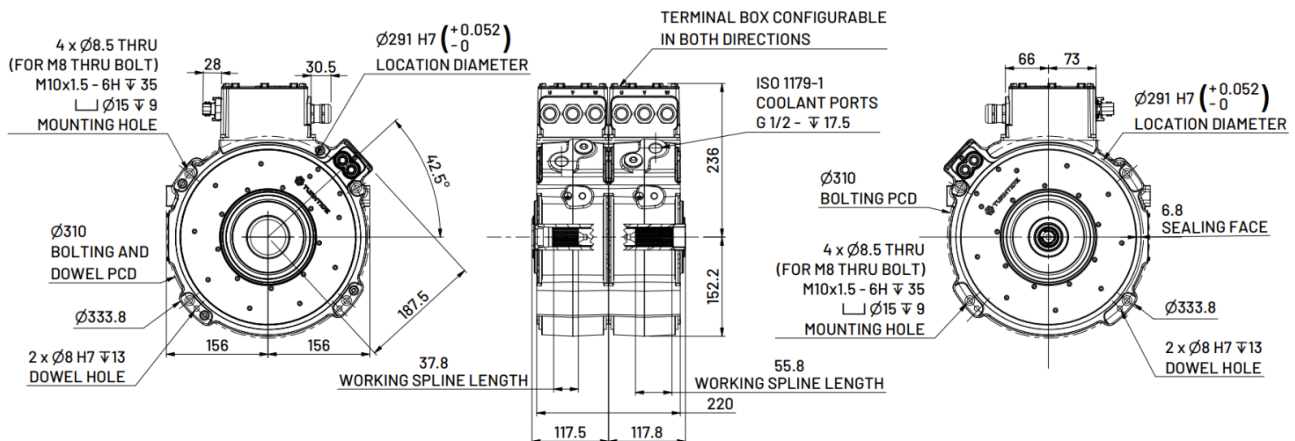
Coolant Temperature Range	-20 °C to 85 °C	Max Winding Temperature	Up to 170 °C
Ambient Temperature Range	-20 °C to 90 °C		
Coolant Type	BS6580-1992 or equivalent	IP Rating	IP67 and IP6k9k

Sensor Output

Temperature Sensor Type (Located in the end windings)	4x PT1000, (2x Bearing RTD optional)	Resolver	3 Phase: 1x TSY1030 (4PP) 6 Phase: 2x TSY1030 (4PP)
--	--------------------------------------	-----------------	--

Mass, Dimensions and Drawings

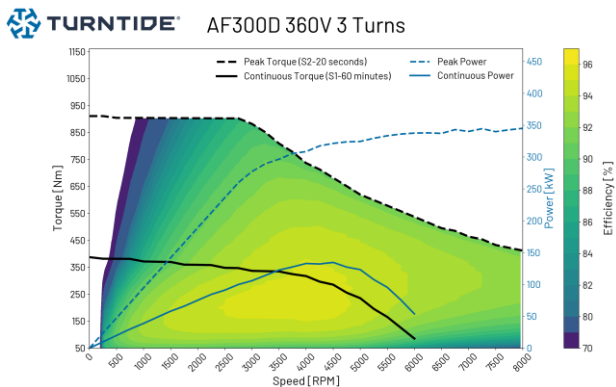
Dry Weight (kg)	57.8	Depth (mm)	220
Diameter (mm)	333.8	Height (mm)	388.2



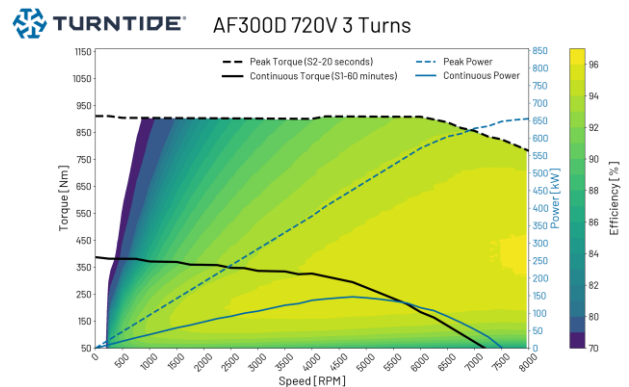
Shaft is a female spline, ISO 4156 (INT 28x x 1.0m x 30P x 5H). For alternative interface requirements, please contact Turntide for further information.

Performance Maps

360 V_{DC} 3T Motor



720 V_{DC} 3T Motor



Efficiency and performance are indicative only and may vary depending on voltage, motor configuration, application, and installation.

For more information on this product or Turntide's range of inverters, motors, batteries, pumps and fans, please visit our website or contact our team of experts at electrificationsales@turntide.com

TURNTIDE TECHNOLOGIES

Turntide Technologies designs and manufactures breakthrough electric motors, power electronics and energy storage solutions that optimize performance, reliability, and efficiency in all things that move.

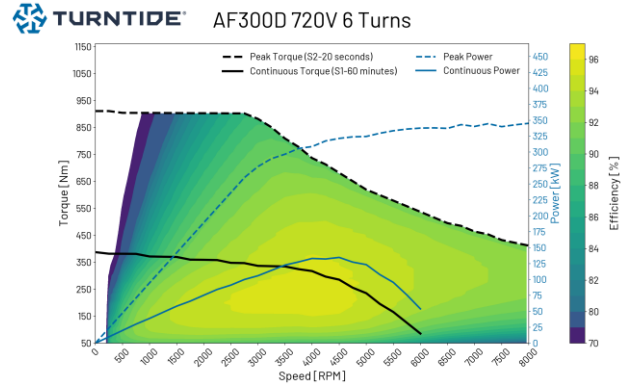
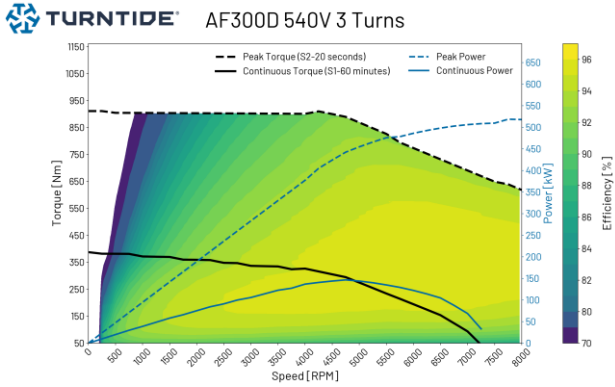
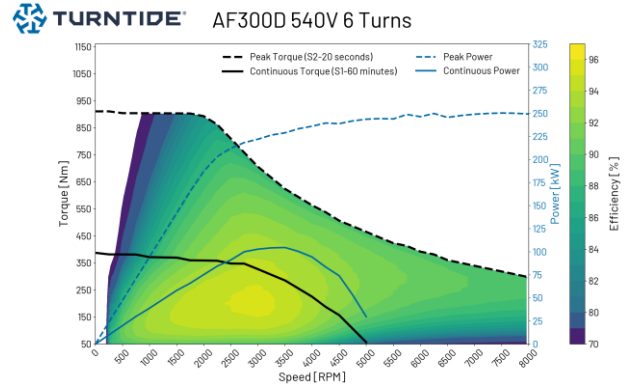
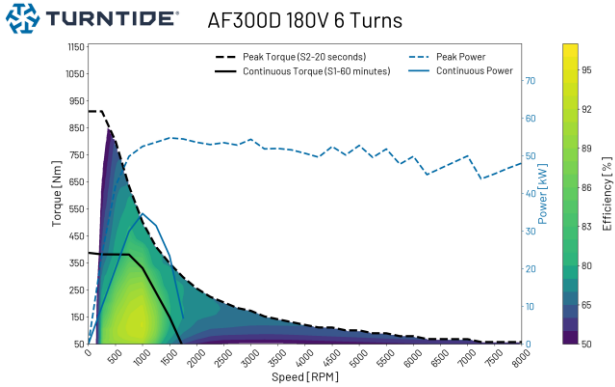
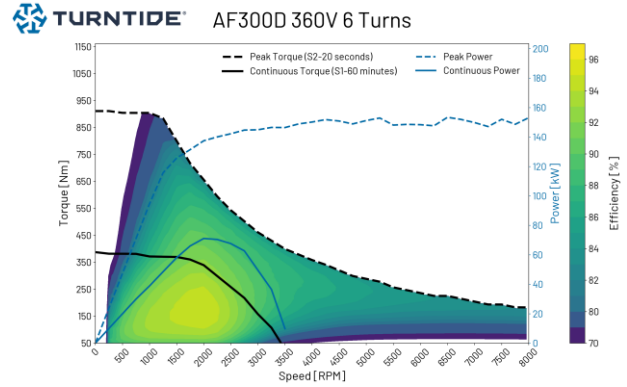
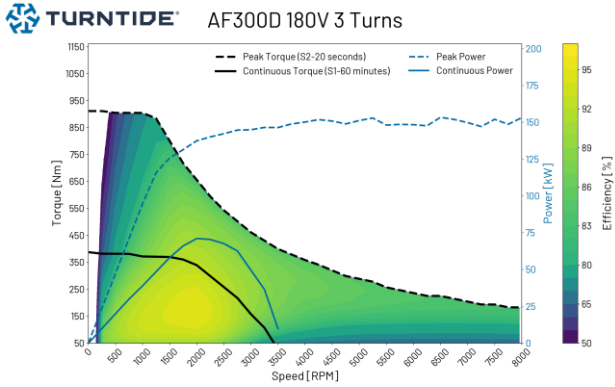
Turntide Technologies, Eighth Avenue, Team Valley Trading Estate, Gateshead, NE11 0QA, UK

turntide.com | electrificationsales@turntide.com

Details are correct at time of publishing

Additional Performance Data Examples

180V_{DC} - 360V_{DC} - 540V_{DC} - 720V_{DC}



Efficiency and performance are indicative only and may vary depending on voltage, motor configuration, application, and installation.

TURNTIDE TECHNOLOGIES

Turntide Technologies designs and manufactures breakthrough electric motors, power electronics and energy storage solutions that optimize performance, reliability, and efficiency in all things that move.

Turntide Technologies, Eighth Avenue, Team Valley Trading Estate, Gateshead, NE11 0QA, UK

turntide.com | electrificationsales@turntide.com

Details are correct at time of publishing