

DATASHEET

eCP80 – 48V Electric Water Pump

Turntide's eCP80 48V is an electrically powered centrifugal pump, configured for use with a 48V DC power supply using CAN bus communication. Supplied with cast aluminium housings, the pump is suitable for a wide range of on and off-road applications.



Features

- Pump family tested against ISO16750 Environmental test standards
- Integrated motor controller provides variable speed control
- CAN communication (SAE J1939 compatible)
- Electrical connector / coolant outlet orientation options available
- Fault reporting
- Integrated power electronics
- Compliant to ECE R10

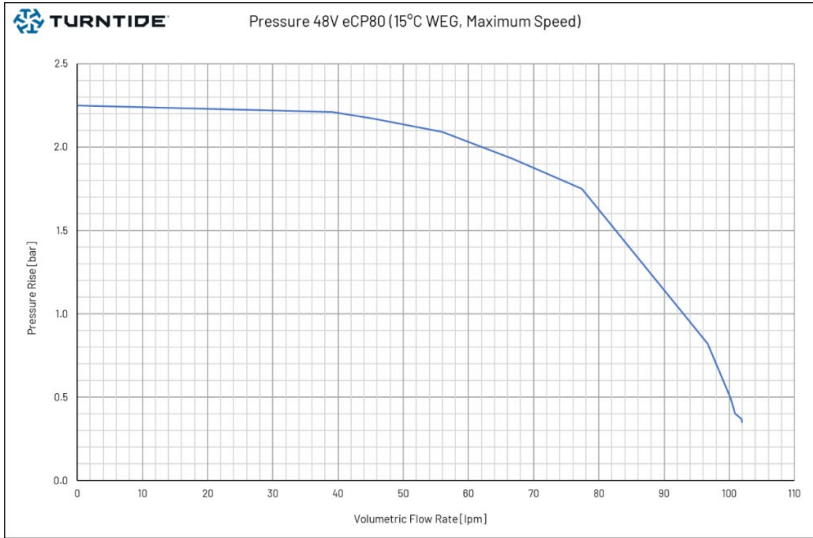
Specifications

Characteristics			
Pump Type	Sealless Centrifugal Impeller	Best Efficiency Point (BEP)	77.4LPM @ 1.8bar static pressure rise
Min Operating Temp	-30°C*	Max Operating Temp	+75°C*
Min Storage Temp	-40°C*	Max Storage Temp	+85°C*
Fluid Connections	1" Hose Barb	Housing Material	Cast Aluminium LM6
IP Rating	IP6k9k		
Interface			
Control	CAN (SAE J1939 compatible)	Connector	Deutsch ICT (TE Connectivity) DT-15-08PA

Electrical

Rated Voltage	36-52V	Max Current	11A**
----------------------	--------	--------------------	-------

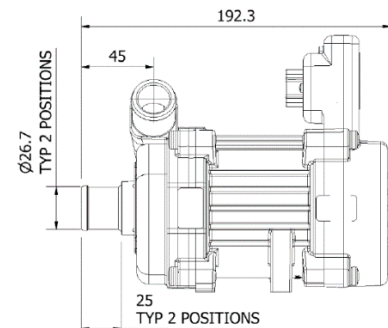
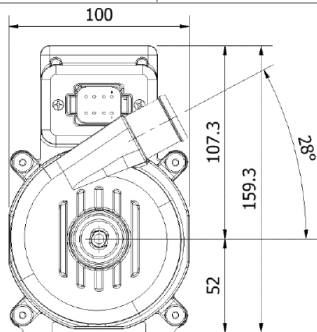
Input DC Power (Max)	510W**
-----------------------------	--------



*Product family tested to ISO16750-4 for operating and storage temps
 **Measured at 48V

Weight and Dimensions

Weight	2.82 kg
---------------	---------



For further information please contact our team of experts at electrificationsales@turntide.com

TURNTIDE TECHNOLOGIES

Our breakthrough technologies accelerate electrification and sustainable operations for energy-intensive industries

Turntide Technologies | 1295 Forgewood Avenue, Sunnyvale, CA 94089

turntide.com | electrificationsales@turntide.com

